

“witeg” WiseBath® WSB Digital Precise Shaking Water Bath, 18- /30- /45- Lit.
 Digital Fuzzy Control, Spring Rack, Reciprocating Motion, 20 ~ 250 rpm, to 100 °C, ± 0,1 °C, up to 2 Lit Flask

- Electronically Controlled Shaking Mechanism Provides Quiet Reciprocating Motion and Precise Speed Control.
- **Patented Shaking Mechanism** : Minimum Noise and Vibration
- **Patented Jog-Shuttle Control System** and Digital LCD Display with Back- Light Function
- CE Certified

Application & Features

- * Stainless Steel Bath for Superior Durability & High Thermal Efficiency.
- * Innovative Easy-to-Use Digital Fuzzy Controller.
- * Digital Timer Function : ‘Delay Time’ and ‘Operation Time’ can be Controlled.
- * Electronically Controlled Shaking Mechanism Provides Quiet Reciprocating Motion and Precise Speed Control.
- * Universal Stainless Steel Spring Rack Included : for various kind of Flasks and Tubes (up to 2 ℓ)
- * User’s Self-Compensation Function to Control Difference between Real Temperature and Indicated Temperature. (± 10,0 °C)
- * Over Temperature & Over Current Protection, Sensor Error Detection.
- * **Patented Shaking Mechanism** : Minimum Noise and Vibration.
- * **Patented Jog-Shuttle Control System** and Digital LCD Display with Back- Light Function.
- * CE Certified.



Digital Precise Shaking Water Bath (WSB-18)

Specification

Model		WSB-18	WSB-30	WSB-45
Dimension (w×d×h)	Bath (mm)	300×300×200	500×300×200	600×380×200
	External (mm)	563×353×340	763×353×340	863×433×340
Capacity		18 Lit.	30 Lit.	45 Lit.
Heater		1,4 kW	1,8 kW	2,4 kW
Max. Shaking Capacity (Erlenmeyer Flask)		250 ml×4 ea	250 ml×8 ea	250 ml×15 ea
Temp.	Range	Ambient +5 °C to 100 °C		
	Accuracy	± 0,1 °C		
	Uniformity	± 0,5 °C		
	Sensor	PT100		
Controller		Digital Fuzzy Controller with Jog- Shuttle Switch (Turn+Push)		
Shaking	Speed	20 to 250 Stroke / min		
	Stroke	20 mm as Factory Default When you place your order, 10, 15 and 30mm, you can choose one.		
Display		Digital LCD Display with Back- Light Function		
Timer		99 hr 59 min (Delay & Continuous Function Included)		
Material	Internal	Stainless Steel (#304)		
	External	Powder Coated Steel		
Rack		Stainless Steel Spring Rack : Universal-type		
Drain		Included		
Safety Device		Over Temp. and Over Current Protector, Sensor Error Detector		
Others		CE-Certified Storage Function (Temp. & Timer) Locking Mode (Jog- Shuttle Input Disabled) User Self - Compensation Function Alarm (Error Status and Timer - end)		
Packing Dimension (w×d×h) (mm)		620×420×450	820×420×450	920×500×450
Gross Weight		24 kg	26 kg	32 kg
Power Consumption		1,4 kW	1,8 kW	2,4 kW
Power plug type		Hybrid E+F		
Power Supply*		AC 230 V, 50 / 60 Hz		

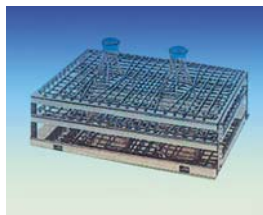
* Other Specifications are available upon Customer’s Request.

Patented Control System
(No. 10-0554098)

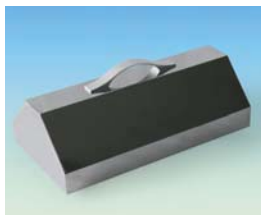
1 or 2 Mode Buttons + Jog Shuttle Switch
Realize “Easy to Use”

<Continued on Next page>

<Continued from... "witeg" **WiseBath®WSB** Digital Precise Shaking Water Bath >



Spring Rack
(Standard Delivery)



Dome Lid (Optional)

Ordering Information

DH.WSB01018* Shaking Water Bath, **WSB-18**, 20~250 rpm, 100 °C, 18 Lit.
DH.WSB01030* , **WSB-30**, 20~250 rpm, 100 °C, 30 Lit.
DH.WSB01045* , **WSB-45**, 20~250 rpm, 100 °C, 45 Lit.

*1 × Stainless steel Spring Rack Included

Spare Accessories

DH.WSB51018 Universal Spring Rack, **SBR018**, for 18 Lit., w 245 × d 270 × h 110 mm
DH.WSB51030 , **SBR030**, for 30 Lit., w 445 × d 270 × h 110 mm
DH.WSB51045 , **SBR045**, for 45 Lit., w 545 × d 350 × h 110 mm

Optional Accessories

DH.WSB02018 Dome Lid, Stainless Steel, **SBD018**, for 18 Lit.
w 363 × d 353 × h 69 mm
DH.WSB02030 Dome Lid, Stainless Steel, **SBD030**, for 30 Lit.
w 563 × d 353 × h 69 mm
DH.WSB02045 Dome Lid, Stainless Steel, **SBD045**, for 45 Lit.
w 663 × d 433 × h 69 mm

Validation (IQ, OQ & PQ) Service

DH.WSB31018 Validation Service(IQ, OQ & PQ), **SBV018**, for 18 Lit.
DH.WSB31030 , **SBV030**, for 30 Lit.
DH.WSB31045 , **SBV045**, for 45 Lit.

※ You will find matching flasks in our general catalogue at following pages : 34, 294, 295, 298, 299, 308.