

## “witeg” **WiseBath®WVB** Digital Precise Viscosity Bath, 30- & 52-Lit.

with Transparent Window, Stainless Steel Lid for Viscometer Holder, Digital Fuzzy Control System, up to 100 °C, ± 0.1 °C

- Used for Precise Measurement with Capillary Viscometers
- Innovative Easy-to-Use Digital Fuzzy Controller
- Powerful Circulation Pump ensures Highest Uniformity of Temperature
- **Patented Jog-Shuttle Control System** and Digital LCD Display with Back-Light Function.
- CE Certified

### Application & Features

- \* Powerful Circulation Pump (30 Lit. / min) ensures Highest Uniformity of Temperature in the Bath.
- \* Used for Precise Measurement with Capillary Viscometers.
- \* Stainless Steel(#304) made inner bath.
- \* Innovative Easy-to-Use Digital Fuzzy Controller.
- \* Stainless Steel Lid Contains Five Holes for Insertion of Viscometer Holders.
- \* Digital Timer Function : ‘Delay Time’ and ‘Operation Time’ can be Controlled.
- \* User’s Self-compensation Function to Control Difference between Real Temperature and Indicated Temperature.
- \* Over Temperature & Over Current Protection, Sensor Error Detection.
- \* Storage Function for the Set Values of Temperature and Time.
- \* Alarm Function : Error Status and Timer-end.
- \* Locking Mode Supported for Experimental Safety. (Input to Jog-Shuttle can be Disabled)
- \* **Patented Jog-Shuttle Control System** and Digital LCD Display with Back-Light Function.
- \* CE Certified.



Digital Precise Viscosity Bath (WVB-30)

### Specification

Model		WVB-30	WVB-52
Dimension (w×d×h)	Bath (mm)	350 × 300 × 300	500 × 300 × 350
	External (mm)	585 × 375 × 420	730 × 380 × 470
Capacity		30 Lit	52 Lit.
Heater		2 kW	3 kW
Temp.	Range	Ambient +5 °C to 100 °C	
	Accuracy	±0,1 °C	
	Uniformity	±0,2 °C	
	Sensor	PT100	
Controller	Digital Fuzzy Controller with Jog- Shuttle Switch (Turn+Push)		
Display	Digital LCD Display with Back -Light Function		
Pump	Magnetic Drive, Max. Flow 30 Lit. / min		
Material	Internal	Stainless Steel ( # 304)	
	External	Powder Coated Steel	
	Window	Vacuum Sealed and Tempered Safety Pair Glasses	
Timer	99 hr 59 min (Delay & Continuous Function Included)		
Safety Device	Over Temp. and Over Current Protector, Sensor Error Detector		
Drain	Included		
Viewing Window Size(mm)	230×180		
Others	CE-Certified Storage Function (Temp. & Timer) Locking Mode (Jog- Shuttle Input Disabled) User Self - Compensation Function Alarm (Error Status and Timer -end)		
Packing Dimension (w×d×h) (mm)	640 × 450 × 500	800 × 450 × 550	
Gross Weight	24 kg	28 kg	
Power Consumption	2 kW	3 kW	
Power plug type	Hybrid E+F		
Power Supply*	AC 230 V, 50 / 60 Hz		

\* Other Specifications are available upon Customer’s Request.

### Patented Control System

(No. 10-0554098)

1 or 2 Mode Buttons + Jog Shuttle Switch  
Realize “Easy to Use”

<Continued on Next page>

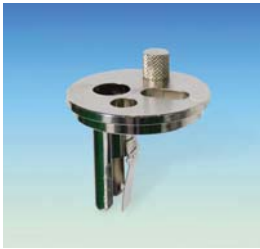
<Continued from... "witeg" **WiseBath®WVB** Digital Precise Viscosity Bath >



**Stainless Steel Lid has 5 Holes  
for Insertion of Viscometer Holders  
(WVB-30, 30Lit.)**



**Viscometer Holder**



**Viscometer Holder**

**Ordering Information**

- DH.WVB01030** Viscosity Bath, **WVB-30**, 30 Lit.
- DH.WVB01052** , **WVB-52**, 52 Lit.
- \*1 × Stainless Steel Lid for Viscometer Holder Included

**Spare Accessories**

- DH.WVB11030** Flat Lid, for Viscometer Holder, Stainless Steel, **VBF030**,  
for 30 Lit., w 380 × d 330, φ 50 mm 5 Holes
- DH.WVB11052** Flat Lid, for Viscometer Holder, Stainless Steel, **VBF052**,  
for 52 Lit., w 530 × d 330, φ 50 mm 9 Holes

**Optional Accessory**

- DH.WVB02010** Viscometer Holder, **WVB02010**

**Validation (IQ, OQ & PQ) Service**

- DH.WVB31030** Validation Service(IQ, OQ & PQ), **VBV030**, for **WVB-30**
- DH.WVB31052** , **VBV052**, for **WVB-52**