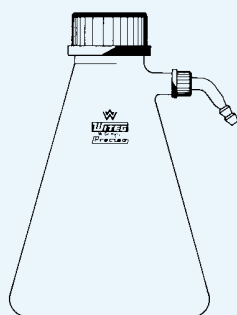
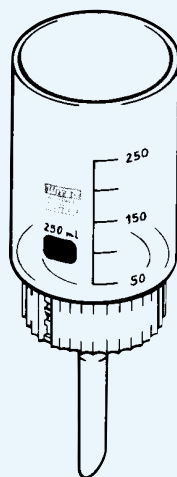




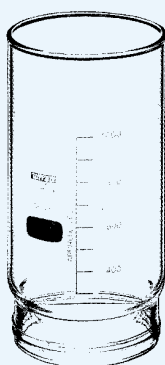
Vacuum filtration *Filtration sous vide*



2.386.***



2.387.***



2.387.***



2.387.***

Buchner filter flask with screw-thread and SVS tubing connection for vacuum use, made of borosilicate glass

Flûle de filtration sous vide en verre borosilicaté avec col fileté et raccord à olive coudée vissable en plastique pour tuyau à vide

Capacity <i>Capacité</i>	Screw-thread <i>Filetage</i>	Tubing connection <i>Raccord</i>	Order No. <i>N° de code</i>
ml	GL	GL	
100	32/10	14	2.386.100
250	32/10	14	2.386.250
500	32/10	14	2.386.500
1000	32/10	14	2.386.001

Spare parts / Pièces de rechange

Filter flask, 100 ml, screw-thread, GL 32 <i>Flûle de 100 ml à filetage 32</i>	2.386.101
Screw cap, top with hole, GL 32 <i>Bouchon à vis perforé GL 32</i>	2.386.102
Gasket, silicone rubber, with PTFE washer, 29 x 10 mm <i>Joint en silicone 29x10mm</i>	2.386.103
Screw cap, top with hole, GL 14 <i>Bouchon à vis perforé GL 14</i>	2.386.104
Hose connection, bent, with gasket, made of polypropylene <i>Raccord à olive coudée avec joint en silicone 29x10mm</i>	2.386.105
Filter flask, 250 ml, screw-thread, GL 32 <i>Flûle de 250 ml à filetage 32</i>	2.386.251
Filter flask, 500 ml, screw-thread, GL 32 <i>Flûle de 500 ml à filetage 32</i>	2.386.501
Filter flask, 1000 ml, screw-thread, GL 32 <i>Flûle de 1000 ml à filetage 32</i>	2.386.901

Screw filters with interchangeable filter plates. Simple and safe to handle. 3 filter heads and 4 filter plates of 4 porosities. Screw filters offer extraordinary advantages when compared with conventional filtration units, made of Polypropylene (PP), autoclaveable up to 140 °C, Complete without plate

Entonnoir filtrant gradué à filetage en polypropylène (PP) autoclavable à 140°C, à plaques filtrantes interchangeables et faciles à nettoyer, pouvant être utilisées en tant que support pour membranes filtrantes. Livré complet mais sans plaque filtrante

Capacity <i>Capacité</i>	For filter plate Ø <i>Pour plaque filtrante de dia.</i>	Screw-thread <i>Taille</i>	Order No. <i>N° de code</i>
ml	mm	mm	
30	24	28	2.387.001
250	50	54	2.387.002
1000	90	95	2.387.003

Filter head with screw-thread

Tête filtrante avec filetage de rechange

Capacity <i>Capacité</i>	For filter plate Ø <i>Pour plaque filtrante de dia.</i>	Order No. <i>N° de code</i>
ml	mm	
30	24	2.387.101
250	50	2.387.102
1000	90	2.387.103

Viton seals

Joint en viton

For filter plate Ø <i>Pour plaque filtrante de dia.</i>	Order No. <i>N° de code</i>
mm	
24	2.387.201
50	2.387.202
90	2.387.203



Filter disc with glass rim

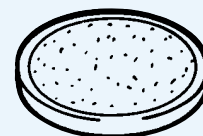
*Plaque filtrante avec bordure en verre
(il est nécessaire de placer la plaque entre deux joints en viton)*

Plate Ø <i>Dia. de plaque</i> mm	Porosity <i>N° de porosité</i>	Order No. <i>N° de code</i>
24	P1	2.387.301
24	P2	2.387.302
24	P3	2.387.303
24	P4	2.387.304
50	P1	2.387.401
50	P2	2.387.402
50	P3	2.387.403
50	P4	2.387.404
90	P1	2.387.501
90	P2	2.387.502
90	P3	2.387.503
90	P4	2.387.504

Funnel, made of Polypropylene (PP)
autoclavable up to 140 °C

*Entonnoir, en polypropylène (PP) de rechange
autoclavable jusqu'à 140°C*

Screw-thread <i>Filetage</i> mm	Stem Ø <i>Ø de la tige</i> mm	Order No. <i>N° de code</i>
28	10	2.387.601
54	12	2.387.602
95	18	2.387.603



2.387.***



2.387.***

Gas washing bottles

Flacon-laveur

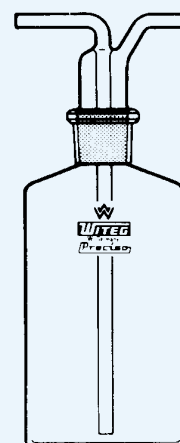
Gas washing bottles, Drechsel
complete, made of borosilicate glass

*Flacon-laveur de Drechsel
en verre borosilicaté, complet*

Capacity <i>Capacité</i> ml	Socket <i>Cône femelle</i> ST	Order No. <i>N° de code</i>
100	29/32	2.400.100
250	29/32	2.400.250
500	29/32	2.400.500
1000	29/32	2.400.001

Spare parts / Pièces de rechange

Head only, ST 29/32 <i>Tête uniquement, RN 29/32</i>	2.400.101
Spare gas washing bottle, 100 ml, ST 29/32 <i>Flacon de 100 ml, RN 29/32</i>	2.401.100
Spare gas washing bottle, 250 ml, ST 29/32 <i>Flacon de 250 ml, RN 29/32</i>	2.401.250
Spare gas washing bottle, 500 ml, ST 29/32 <i>Flacon de 500 ml, RN 29/32</i>	2.401.500
Spare gas washing bottle, 1000 ml, ST 29/32 <i>Flacon de 1000 ml, RN 29/32</i>	2.401.001



2.400.***