

Temperature Logger for F-Value Measurement

Accessories

Evaluation systems



EBI AE-S Version C

Interface for data logger
EBI 85-A / 125-A



EBI AE-2000-Set

Interface for data logger
EBI 85-A / 125-A

Protective silicone box



EBI SSB-EM

Protective silicone box for temperature logger
EBI 125-A-EM-XXX. Max. dwell time at 190°C
approx. 32 minutes



Clamp connection

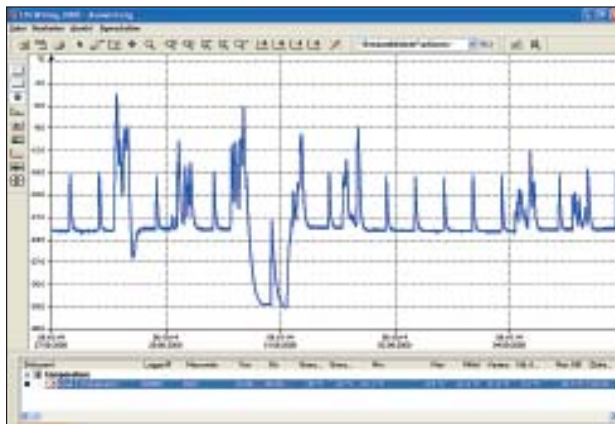
EBI KV-3
This connection allows the user to accurately
fix the logger probe to cans or glasses.



Press-in nipple

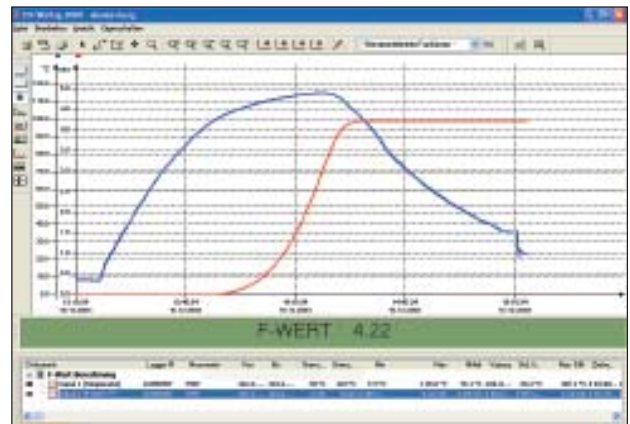
EBI NI-140, to 140°C (284°F), 100 pcs.
Allows for precise fixing of logger probe
in cans or jars.

Software Description



Standard-Version

Standard Version WINLOG 2000-S:
Graphic and numeric display of the temperature and pressure curve,
self-explanatory, can be operated immediately, with online help, secure
against manipulation



Professional Version

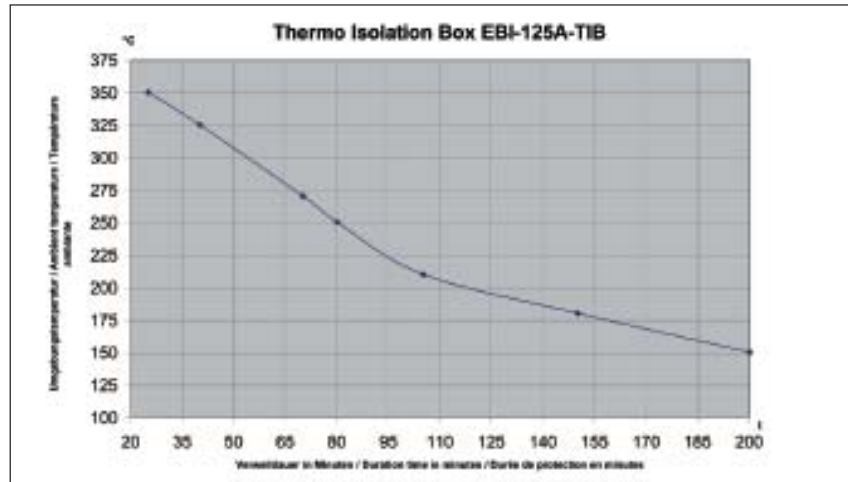
Professional version WINLOG 2000-P:
Graphic and numeric display of the temperature and pressure curve,
scaling option, user-defined functions, access encoding, formula editor
for calculating the theoretical temperature, A₀-value 60; 600 and 3 000;
F₀-value; unit administration, secure against manipulation

Temperature Logger for F-Value Measurement Accessories

Thermal Insulation box



EBI TIB



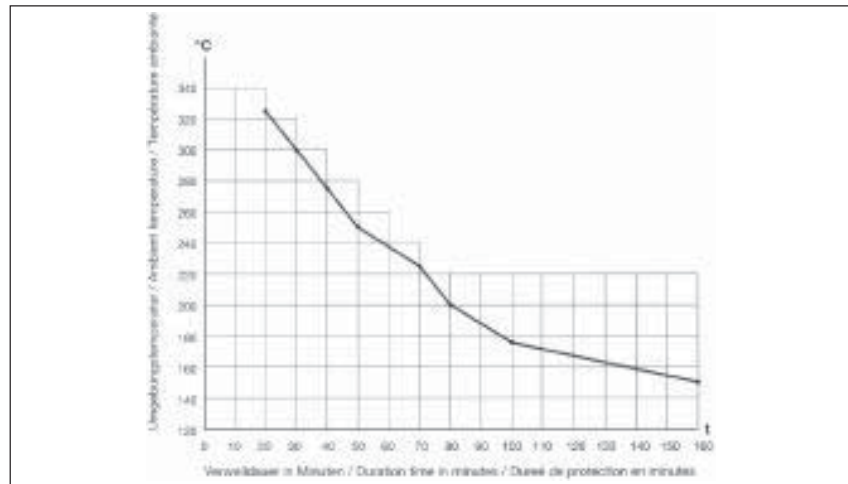
Ambient temperature

Thermal insulation box for R-Logger. Stainless steel, 160 x 160 x 82 mm

Thermal Insulation box



EBI ID 114x160



Ambient temperature

Thermal insulation box for temperature logger EBI 125-A-EM 500-F 1,6 for hot air sterilization.
Max. retention period at 180°C (356°F) approximately 95 min.

Accessories	Type	Part No.
Clamp connection	EBI KV3	1340-2005
Press-in nipple up to 140°C (100 pcs.)	EBI NI-140	1340-1988
Protective silicone box for EM Logger	EBI SSB-EM	1340-1896
Large thermal insulation box	EBI ID-114x160	1340-1900
Thermal insulation box for R Logger	EBI TIB	1340-1894
Large thermal insulation box (2-channel-version)	EBI ID-114x160-2K	1340-1899
Interface set for EBI 85-A/ 125-A (without software)	EBI KSY-AE-S Version C	1340-2074
Interface set for EBI 1 / EBI 2 (without software)	EBI AE-2000-Set	1340-2080
Software (standard-Version)	EBI WINLOG 2000-S	1340-2300
Additional license for WINLOG 2000-S	Additional license-S	1340-2302
Software (professionel version)	EBI WINLOG 2000-P	1340-2310
Additional license for WINLOG 2000-P	Additional license-P	1340-2312
Software manual	WINLOG manual	1340-2350

Temperature Logger for F-Value Measurement

EBI DA-Set

EBI DA-Set



Adapter Set

This adapter set provides elements for mechanically attaching the data logger to cans or plastic pouches. For EBI-series data loggers with axial, radial or external probes. The use of these adapters ensures that the data logger measures at the desired point, for example in a can.

Description	Type	Part No.
Adapter Set	EBI DA-Set	1340-1984



Temperature Logger for the Beverage Industry

EBI 125-A for PU-Value Measurement



EBI 125-A

Technical Data

Type	EBI 125-A
Measuring range	-40°C ... +125°C (-40°F ... 257°F) up to +140°C (284°F) max. 1 h up to +135°C (275°F) max. 3 h
Accuracy	±0.3°C (±0.5°F)
Resolution	0.1°C (0.2°F)
Sensor	Pt 1000
Measuring rate	from 1 second to 24 h
Memory	18 000 samples
Measuring mode	loop, start/stop or start with set measuring rate
Battery	3.6 V lithium
Battery life	3 to 5 years
Housing material	stainless steel, PEEK, suitable for food products
Dimensions	Ø 48 x 28 mm high
Protection class	IP 68
Weight	approx. 150 g
Certificate	3 point factory calibration



Applications

- Determination of the PU-value for beverage production
- Monitoring of pasteurization systems
- Temperature process monitoring in production

Attributes

- Completely waterproof
- Temperature resistant to +140°C
- Suitable for food products
- Compact
- High accuracy
- Factory calibration certificate
- Different forms
- No wires necessary

Comments

See pages 39 - 41 for data logger variants, bottle adapters, can adapters and dummy bottle for cleaning systems.

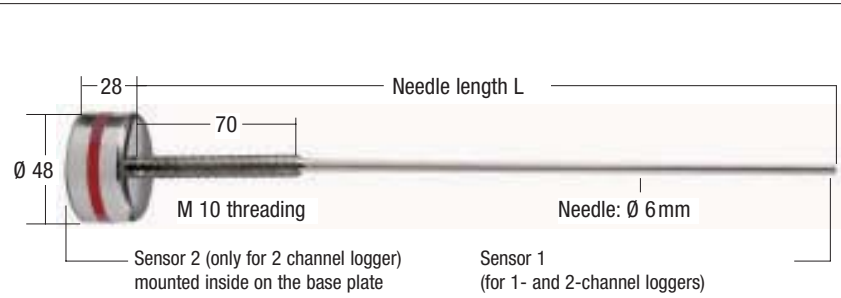
Temperature Logger for the Beverage Industry

EBI 125-A for PU-Value Measurement

for open bottles



Adapter EBI FL-S

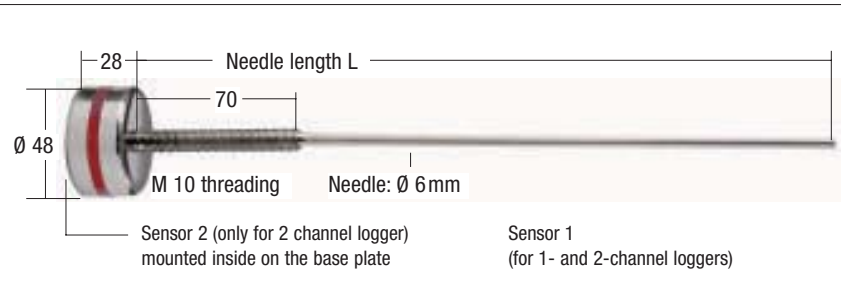


EBI 125-A-EM-XXX-6

in cans



Adapter EBI DA



EBI 125-A-EM-XXX-6



EBI FL-1T

Comments

- Also suitable for cans.
- Please stipulate botte type and bottle size with your order.

Description	Type	Part No.
Bottle logger -40/+140°C	EBI 125-A-EM-135-6	1340-1955
Bottle logger 2-channel -40/+140°C	EBI 125-A-EM-135-6-2K	1340-1855
Bottle logger -40/+140°C	EBI 125-A-EM-190-6	1340-1956
Bottle logger 2-channel -40/+140°C	EBI 125-A-EM-190-6-2K	1340-1856
Bottle logger -40/+140°C	EBI 125-A-EM-245-6	1340-1957
Bottle logger 2-channel -40/+140°C	EBI 125-A-EM-245-6-2K	1340-1857
Bottle logger -40/+140°C	EBI 125-A-EM-300-6	1340-1958
Bottle logger 2-channel -40/+140°C	EBI 125-A-EM-300-6-2K	1340-1858
Bottle adapter, silicone	EBI FL-S	1340-1961
Can adapter	EBI DA	1340-1963
Bottle adapter, with 2 lateral windings	EBI FL-1T	1340-2185

Temperature Logger for the Beverage Industry

EBI 125-A for Bottle and Keg Cleaning

in bottles



GDB dummy bottle

other bottle sizes (NRW, etc.)
on request



EBI 125-A data logger for dummy bottle

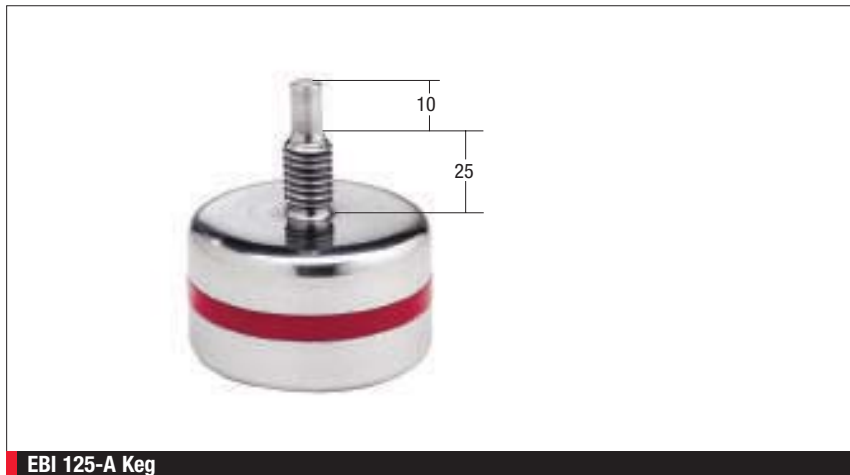
-40° C ... +125° C / 140° C (-40°F ... 257°F / 284°F)

Keg Logger



Dummy-Keg

A threaded adapter is welded into the keg
(at ebro on request)



EBI 125-A Keg

-40° C ... +125° C (-40°F ... 257°F), with M10 threading, external sensor

Description	Type	Part No.
Temperature logger	EBI 125-A	1340-1916
Keg logger	EBI 125-A Keg	1340-1959
Keg adapter		1340-1890
Dummy bottle 1.5 l		on request
Dummy bottle 1.0 l		on request
Dummy bottle 0.7 l	GDB	1340-2250
Dummy bottle 0.5 l	NRW	1340-2252

Temperature / Pressure Logger for the Beverage Industry

EBI 125-A-PT-U 10 for CO₂- and PU-Value Calculation



Technical Data	
Type	EBI 125-A
Measuring range	-40°C ... +140°C (+140°C up to max. 1 h) -40°C ... +135°C (+135°C up to max. 3 h) -40°F ... +284°F (+284°F up to max. 1 h) -40°F ... +275°F (+275°F up to max. 1 h) -40°C ... +125°C (-40°F ... +257°F) continuous operation
Pressure measuring range	0 to 10 bar (145 psi)
Memory capacity	2-channel: approx. 2 x 9 000 samples
Logger housing	stainless steel, PEEK, waterproof IP 68
Needle type probe	stainless steel, L= 190 mm and 250 mm
Housing pressure resistance	20 mbar - 20 bar (absolute pressure)
Measurement recording	automatic
Measuring mode	loop, start/stop or start with set measuring rate
Measurement interval	freely programmable from 1 sec. to 8 h (1 sec. is equivalent to a measurement period of 5 h)
Temperature sensor	Pt 1000
Pressure sensor	ceramic measuring cell (temp. compensated)
Resolution	0.1°C (0.2°F) / 1 bar
Accuracy	±0.3°C (±0.5°F) / ±0.5% of measuring range
Battery	approx. 3 - 5 years

EBI 125-A



Applications		
<ul style="list-style-type: none"> Determination of the PU-value during beverage production 	<ul style="list-style-type: none"> CO₂-calculation 	<ul style="list-style-type: none"> Temperature and pressure monitoring in bottles

Attributes		
<ul style="list-style-type: none"> Completely waterproof Temperature-resistant up to +140°C Suitable for food products 	<ul style="list-style-type: none"> Compact High accuracy Factory calibration certificate 	<ul style="list-style-type: none"> Different forms No wires necessary

Description	Type	Part No.
Temperature/pressure logger	EBI 125-A-PT-U10	1340-2124

Comments
See pages 39 - 41 for data loggers and accessories.

Data Logger Sets for the Beverage Industry

EBI Pasteur



The temperature monitoring system for pasteurization, consisting of:

- Temperature logger EBI 125-A-EM-xxx-6, needle length: 135 mm, 190 mm, 245 mm, 300 mm
- 2 pcs. bottle adapters EBI-FL-S
- 1 can adapter EBI-DA
- Interface EBI AE-S, Version C
- Software EBI WINLOG 2000, professional version
- Teflon tape, case

Please indicate the needle length for the data logger in your order.

EBI Clean



The temperature monitoring system for bottle cleaning, consisting of:

- Temperature logger EBI 125-A
- GDB dummy bottle 0.7l in perforated metal (other sizes available on request for surcharge)
- Interface EBI-AE-S, Version C
- Software EBI-WINLOG 2000, professional version
- Case

EBI CO₂-Set



consisting of:

- Temperature/pressure logger EBI 125-A-PT-U-10
- 2 pcs. bottle adapters EBI FL-S
- 1 can adapter EBI DA
- Interface EBI AE-S, Version C
- Software EBI WINLOG 2000, professional version
- Teflon tape, case

Description	Type	Part No.
Temperature logger set for bottle cleaning	EBI CLEAN-SET	1340-2150
Pressure logger set for CO ₂ checks	EBI CO ₂ -SET	1340-2165
Temperature logger set for pasteurization	EBI PASTEUR-SET	1340-2155

The ebro[®] EBI 2 data logger family: Robust, adaptable, userfriendly

Wherever measurement data needs to be instantly available, the device of choice is a data logger from the EBI 2 family. The large, easily-readable display instantly shows readings such as temperature and humidity. A completely new design, extended measuring ranges and useful additional functions make the loggers even more attractive.

EBI 2 data loggers are being used in many areas:

Price-favourable cooling chamber loggers for butcher's shops and the catering trade, temperature and humidity loggers for monitoring food products sensitive to humidity, special butcher loggers for cooling chambers and refrigerated display cases, and truck loggers for wireless monitoring of up to four measuring points in the cargo area.